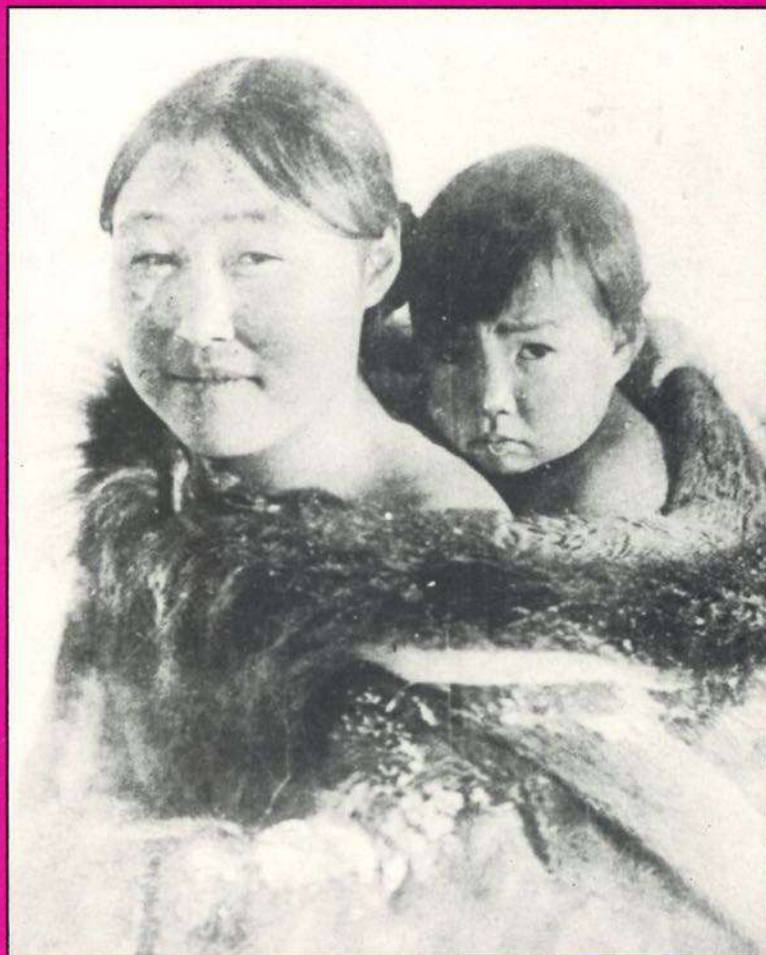


PAUKTUUTIT
INUIT WOMEN'S ASSOCIATION

◁▷^b▷^c

$\triangle \circ \triangle^c \triangleleft^c \triangle^c$ $b \triangleright^c \triangleright^c b \cap \dot{\cap}^c r^c$



ANNUAL REPORT / ၎်ႈႁူၺ်ႇ ၵႃႇႁူၺ်ႇ

1992 / 1993

Table of Contents



President's Message	1
Pauktuutit's Aims and Objectives	3
Pauktuutit, Inuit Women's Association 1992-93	4
Report on Issues	6
Family Violence	6
Health	7
Health Consultation Project	7
Mental Health Workshop	7
Child Health Working Group	8
Suicide Prevention Video	8
Midwifery	9
Justice	10
Economic Development	12
Banff Arts Project	13
Publications	14
Report on the 9th Annual General Meeting	15
Introduction	15
Royal Commission on Aboriginal Affairs	16
Midwifery Research	16
Health Project	16
Suicide Prevention Video: <u>Inuutsiarniq</u>	18
Inuit Women and the Administration of Justice	18
Regional Reports	19
Adoption	22
Self-Government	23
Family Violence	23
Elections	25
Youth and Elders	25
Economic Development	25
1993 Resolutions	26
Participants	28
Financial Summary	30
Acknowledgements	31
Credits	32

iii

[illegible][illegible][illegible][illegible]

1

3



Pauktuutit, Inuit Women's Association 1992-93

<D'N'D', Δ-Δ' Δ'Δ' 6D'P'N'D' **1992-93**

Executive

$\Delta^{\frac{1}{2}} \nabla^{\frac{1}{2}} b_n \leq D \nabla^c$



Martha Flaherty / President

LC 44D7N / 454969



Martha Greig / Vice-President

LC Jn^h / 4545b^h 3544



Andrea Webb / Sec.-Treasurer

$d^{\circ} \sim d$ Δd° / $n n s^{\circ} n -$
 $p q D L S \sim p$

Regional Board Members

$\Delta A' \propto PL\sigma^{\frac{1}{2}}\omega^{\frac{1}{2}}$ $bNL\rho D^{-\frac{1}{2}}$



Edith Haogak / Western Arctic

$$\Delta n^e \quad H\Delta D L^e \quad / \quad D\Delta C\sigma^e J^e$$


Salomie Qitsualik / Kitikmeot

٥٣٧ '٢٢٧٤' / '٢٠٢٧' ٥



Hattie Alagalak / Keewatin

HDN 4696 / P9667



Enooya Enook / Baffin

$$\Delta f^a \quad \Delta f^b \quad / \quad \varphi^a \psi^b$$


Leah Panniluk / Baffin

54 <σ> / 'pp' <σ>



Lizzie Palliser / Hudson Nunavik

52 53 / 54 55



Kitty Pearson / Ungava Nunavik

ᑭᑦᑭᑦ ᑭᑦᑭᑦ / ᑭᑦᑭᑦ



Sharon Edmunds / Labrador

ᑭᑦᑭᑦ ᑭᑦᑭᑦ / ᑭᑦᑭᑦ

Staff of Pauktuutit

ᑭᑦᑭᑦ ᑭᑦᑭᑦ ᑭᑦᑭᑦ



Sally Webster

ᑭᑦᑭᑦ ᑭᑦᑭᑦ



Simona Arnatsiaq-Barnes

ᑭᑦᑭᑦ ᑭᑦᑭᑦ - ᑭᑦᑭᑦ



Sophie Tom

ᑭᑦᑭᑦ ᑭᑦᑭᑦ



Roda Grey

ᑭᑦᑭᑦ ᑭᑦᑭᑦ

National Office

Pauktuutit
Inuit Women's Association
of Canada
200 Elgin Street,
Suite 804
Ottawa, Ontario,
K2P 1L5
(613) 238-3977 (telephone)
(613) 238-1787 (fax)

ᑭᑦᑭᑦ ᑭᑦᑭᑦ ᑭᑦᑭᑦ

ᑭᑦᑭᑦ ᑭᑦᑭᑦ
ᑭᑦᑭᑦ ᑭᑦᑭᑦ ᑭᑦᑭᑦ
ᑭᑦᑭᑦ
200 ᑭᑦᑭᑦ ᑭᑦᑭᑦ
ᑭᑦᑭᑦ 804
ᑭᑦᑭᑦ, ᑭᑦᑭᑦ
K2P 1L5
(613) 238-3977 (ᑭᑦᑭᑦ)
(613) 238-1787 (ᑭᑦᑭᑦ)



Introduction

△ ۱۲۹۹

Family Violence

$\Delta c \dot{r}^c$ $a \cdot \Gamma \sigma \dot{r}^c$
 $\dot{d}^a \sigma^c \dot{r}^b \dot{c} \dot{d} \dot{r}^c \sigma^c \dot{r}^c$

[illegible]

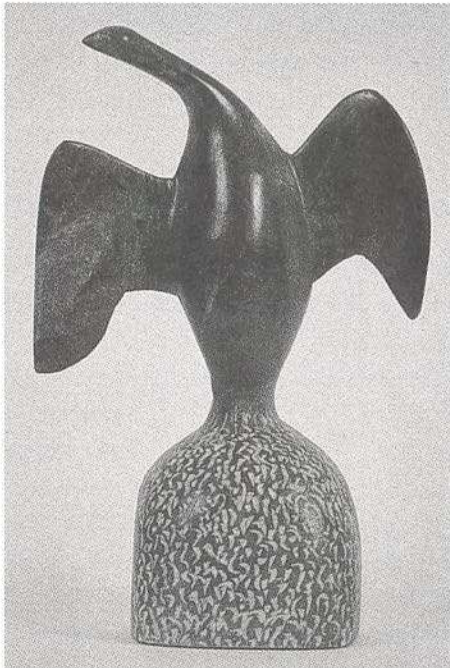
6

[illegible][illegible][illegible]



Banff Arts Project

In 1992 Alberta's Banff Centre for the Arts invited Ruby Arngna'naaq to co-ordinate a project in which Inuit women artists would spend 10 weeks at the Centre, meeting with other artists and making use of the Centre's state-of-the-art facilities. Between January 18 and March 26, 1993, with the assistance of Pauktuutit, six Inuit women visual artists from across the North attended the Banff Centre, along with co-ordinator Ruby Arngna'naaq, singer/songwriter Susan Aglukark who participated in the Centre's Music-Theatre program, Rhoda Karetak and Pauktuutit Special Projects Co-ordinator Linda Archibald. The experience was a unique opportunity for Inuit women artists to meet with other artists of different artistic, cultural and ethnic backgrounds and to work in a venue wholly given over to artistic production.



A stone bird carved by a participant during the Banff Arts Project.

[illegible][illegible][illegible]
$$\begin{aligned} & \langle^{\alpha}\epsilon\Gamma \quad \quad \quad \text{ } ^{\gamma}\omega^{\alpha}\psi\Delta^{\beta}\cap\sigma^{\delta} \\ & \quad \quad \quad b\cap^{\epsilon}\cap\sigma^{\delta}\wedge\sigma^{\epsilon} \end{aligned}$$
[illegible][illegible]

PAUKTUUTIT 9TH ANNUAL

Children 4 types of roles
They take about they are in
and how they feel about it

1. Child
2. Parent
3. Teacher
4. Student

They take about they are in
and how they feel about it

1. Child
2. Parent
3. Teacher
4. Student

[illegible]

Λ ρ Δ ϵ σ ζ

[illegible][illegible]



A black and white photograph of two young women. The woman in the foreground is wearing round glasses and a dark sweater with a light-colored geometric pattern. She is looking off to the side with a slight smile. Behind her, another woman with dark, curly hair is visible, resting her chin on her hand and looking in the same direction. The background is out of focus, showing some indistinct shapes.

ΓΔΕ Ή ΕΒΛΕΨΕ (ΕΝΘΑ ΔΕ) ΕΠΙΛΕΞΕΤΟ Ο ΜΕΛΟΣ
ΔΕ ΕΛΕΥΘΕΡΟΝ ΕΝ ΔΕ

Inuit Women and the Administration of Justice

$\Delta \rightarrow^c P Q^\circ \sigma^\bullet :$

$\Delta \vdash \Gamma \rightarrow^{\circ b} c^\bullet C^\bullet N^\bullet C^\bullet \Delta \leftarrow \sigma^\bullet J^\bullet$

$C^\bullet \alpha \rightarrow P \rightarrow P Q^\bullet$

$\Delta \circ \Delta^c$ $\nabla^c \alpha^c$ $\nabla^L L \circ$
 $\Delta^c b^c \circ \Delta \wedge c \sim \sigma \nabla^c$
 $\nabla \nabla c \subset \nabla \sigma^c$

18

[illegible][illegible]



$\Delta \subset \mathbb{R}^n$ (1) $\Delta \subset \mathbb{R}^n$ (2) $\Delta \subset \mathbb{R}^n$

$\Delta c \dot{r}^c$ $a \cdot \Gamma \sigma \dot{r}^c$
 $\dot{d}^a \sigma^b \dot{r}^c \dot{r}^b \dot{r}^c \dot{r}^c \dot{r}^c \dot{r}^c \dot{r}^c \dot{r}^c$

[illegible]



93-04: directs Pauktuutit to lobby governments and politicians to inform the public of the harmful effects, especially to children, of violence and pornography on television and videos, and supports the development of regulations controlling exposure to violence on television and in videos.

93-03: ΔΔΔ ΔΔΔ ΔΔΔ ΔΔΔΔΔΔΔΔΔΔΔΔ
 ΔΔΔΔΔΔΔΔΔ ΔΔΔΔΔΔΔΔΔΔ ΔΔΔΔ
 ΔΔΔΔΔΔΔΔΔ ΔΔΔ ΔΔΔ ΔΔΔΔ
 ΔΔΔΔΔΔΔΔΔ, ΔΔΔΔΔΔΔ
 ΔΔΔΔΔΔΔΔΔ ΔΔΔΔΔ ΔΔΔΔΔΔΔΔΔ
 ΔΔΔ ΔΔΔΔΔΔΔΔΔ ΔΔΔΔΔΔΔΔΔΔ
 ΔΔΔΔ ΔΔΔΔ ΔΔΔΔ ΔΔΔΔΔΔΔΔΔ
 ΔΔΔΔ ΔΔΔΔ ΔΔΔΔΔΔΔΔΔ.



**Baffin**

Enooya Enook (Board Member)
 Leah Panniluk (Board Member)
 Leah Audlakiak
 Annie Cookie
 Alasi Joamie
 Abigail Kaernerker
 Nuvalingaq Kinguasiasaq
 Arviqtuiq Kownerk
 Jeela Maniapik
 Tagak Manik
 Laisa Ninguiuk
 Sami Qaumariaq
 Joanase Salomonie
 Blandina Tulugajuk

Pond Inlet
 Clyde River
 Broughton Island
 Sanikiluaq
 Iqaluit
 Hall Beach
 Cape Dorset
 Hall Beach
 Pangnirtung
 Resolute Bay
 Grise Fiord
 Iqaluit
 Iqaluit
 Iqaluit

ᑭᑭᑦᑭᑦᑭᑦ

ᑭᑭ ᑭᑭᑦ
 ᑭᑦᑭᑦ ᑭᑦᑭᑦ
 ᑭᑭᑦᑭᑦ ᑭᑦᑭᑦᑭᑦ
 ᑭᑭ ᑭᑦᑭᑦᑭᑦ
 ᑭᑦᑭᑦ ᑭᑦᑭᑦ
 ᑭᑭ ᑭᑦᑭᑦᑭᑦᑭᑦ
 ᑭᑦᑭᑦ ᑭᑦᑭᑦ
 ᑭᑦᑭᑦ ᑭᑦᑭᑦ
 ᑭᑦᑭᑦ ᑭᑦᑭᑦ
 ᑭᑦᑭᑦ ᑭᑦᑭᑦ
 ᑭᑦᑭᑦ ᑭᑦᑭᑦ
 ᑭᑦᑭᑦ ᑭᑦᑭᑦ
 ᑭᑦᑭᑦ ᑭᑦᑭᑦ
 ᑭᑦᑭᑦ ᑭᑦᑭᑦ

ᑭᑦᑭᑦᑭᑦᑭᑦ
 ᑭᑦᑭᑦᑭᑦᑭᑦ
 ᑭᑦᑭᑦᑭᑦ
 ᑭᑦᑭᑦᑭᑦᑭᑦ
 ᑭᑦᑭᑦᑭᑦᑭᑦ
 ᑭᑦᑭᑦᑭᑦᑭᑦ
 ᑭᑦᑭᑦᑭᑦ
 ᑭᑦᑭᑦᑭᑦᑭᑦ
 ᑭᑦᑭᑦᑭᑦ
 ᑭᑦᑭᑦᑭᑦ
 ᑭᑦᑭᑦᑭᑦ
 ᑭᑦᑭᑦᑭᑦ
 ᑭᑦᑭᑦᑭᑦ
 ᑭᑦᑭᑦᑭᑦ
 ᑭᑦᑭᑦᑭᑦ

Nunavik (Ungava)

Kitty Pearson (Board Member)
 Kitty Arngnatuk
 Sapina Adams
 Sarah Kullula
 Lizzie Unatweenaq

Kuujuuak
 Quataq
 Kuujuaq
 Quataq
 Kangiqsualujuaq

ᑭᑦᑭᑦᑭᑦᑭᑦᑭᑦ

ᑭᑦᑭᑦ ᑭᑦᑭᑦᑭᑦ
 ᑭᑦᑭᑦ ᑭᑦᑭᑦᑭᑦ
 ᑭᑦᑭᑦ ᑭᑦᑭᑦᑭᑦ
 ᑭᑦᑭᑦ ᑭᑦᑭᑦᑭᑦᑭᑦ
 ᑭᑦᑭᑦ ᑭᑦᑭᑦᑭᑦ

ᑭᑦᑭᑦᑭᑦᑭᑦ
 ᑭᑦᑭᑦᑭᑦ
 ᑭᑦᑭᑦᑭᑦᑭᑦ
 ᑭᑦᑭᑦᑭᑦᑭᑦᑭᑦ
 ᑭᑦᑭᑦᑭᑦᑭᑦ

Nunavik (Hudson)

Lizzie Palliser (Board Member)
 Caroline Mukimmuk
 Nellie Nungak
 Lizzie Papialuk
 Seporah Qumaaluk
 Pasa Weetaluktuk

Inukjuaq
 Akulivik
 Povungnituk
 Kuujuarapik
 Umiujaq
 Inukjuaq

ᑭᑦᑭᑦᑭᑦᑭᑦᑭᑦ

ᑭᑦᑭᑦ ᑭᑦᑭᑦ
 ᑭᑦᑭᑦ ᑭᑦᑭᑦᑭᑦᑭᑦ
 ᑭᑦᑭᑦᑭᑦᑭᑦ ᑭᑦᑭᑦᑭᑦ
 ᑭᑦᑭᑦ ᑭᑦᑭᑦᑭᑦ
 ᑭᑦᑭᑦ ᑭᑦᑭᑦᑭᑦ
 ᑭᑦᑭᑦ ᑭᑦᑭᑦᑭᑦ

ᑭᑦᑭᑦᑭᑦᑭᑦ
 ᑭᑦᑭᑦᑭᑦᑭᑦ
 ᑭᑦᑭᑦᑭᑦ
 ᑭᑦᑭᑦᑭᑦ
 ᑭᑦᑭᑦᑭᑦᑭᑦᑭᑦ
 ᑭᑦᑭᑦᑭᑦᑭᑦ



Financial Summary

March 31, 1993

March 31, 1993

	Money Received	Money Spent	Cash Surplus (Deficit)
CORE-Operating Account*			
Office Operations	\$276,524	\$212,344	\$55,180
Annual General Meeting (AGM)	\$70,000	\$55,570	\$14,430

* Office operations and AGM combined resulted in a \$69,610 net revenue position for the year.

Total government contributions to special projects were \$745,315 for the fiscal year 1992/93 offset by total expenses of \$783,733. This resulted in a net expense position of \$38,418 on special project activities for the year. Deferred revenue of \$87,203 is excluded from this account - to be recorded as income in 1993/94.

There was an overall surplus position of \$31,430 as of March 31, 1993.

Funding by the Department of the Secretary of State for the fiscal year 1992-93 is at \$333,000, held constant from the prior year.

This represents a summary of the 1992/93 financial statement as provided to the Association by the auditors. These financial statements will be made available to the members of the Association at the next Annual General Meeting.

March 31, 1993

	Money Received	Money Spent	Cash Surplus (Deficit)
CORE-Operating Account*			
Office Operations	\$776,524	\$212,344	\$55,180
Annual General Meeting (AGM)	\$70,000	\$55,570	\$14,430

Office operations and AGM combined resulted in a \$69,610 net revenue position for the year.

Total government contributions to special projects were \$745,315 for the fiscal year 1992/93 offset by total expenses of \$783,733. This resulted in a net expense position of \$38,418 on special project activities for the year. Deferred revenue of \$87,203 is excluded from this account - to be recorded as income in 1993/94.

There was an overall surplus position of \$31,430 as of March 31, 1993.

Funding by the Department of the Secretary of State for the fiscal year 1992-93 is at \$333,000, held constant from the prior year.

This represents a summary of the 1992/93 financial statement as provided to the Association by the auditors. These financial statements will be made available to the members of the Association at the next Annual General Meeting.

31

 $\Delta b \leq \epsilon_b \quad \mu L \leq \epsilon_c$ [illegible][illegible][illegible]

Δ_᾿Π_᾿Γ_᾿Λ_᾿Ρ_᾿: Λ[᾿]Ω_᾿Π Δ_᾿Λ_᾿Ρ_᾿Δ[᾿]Υ[᾿]

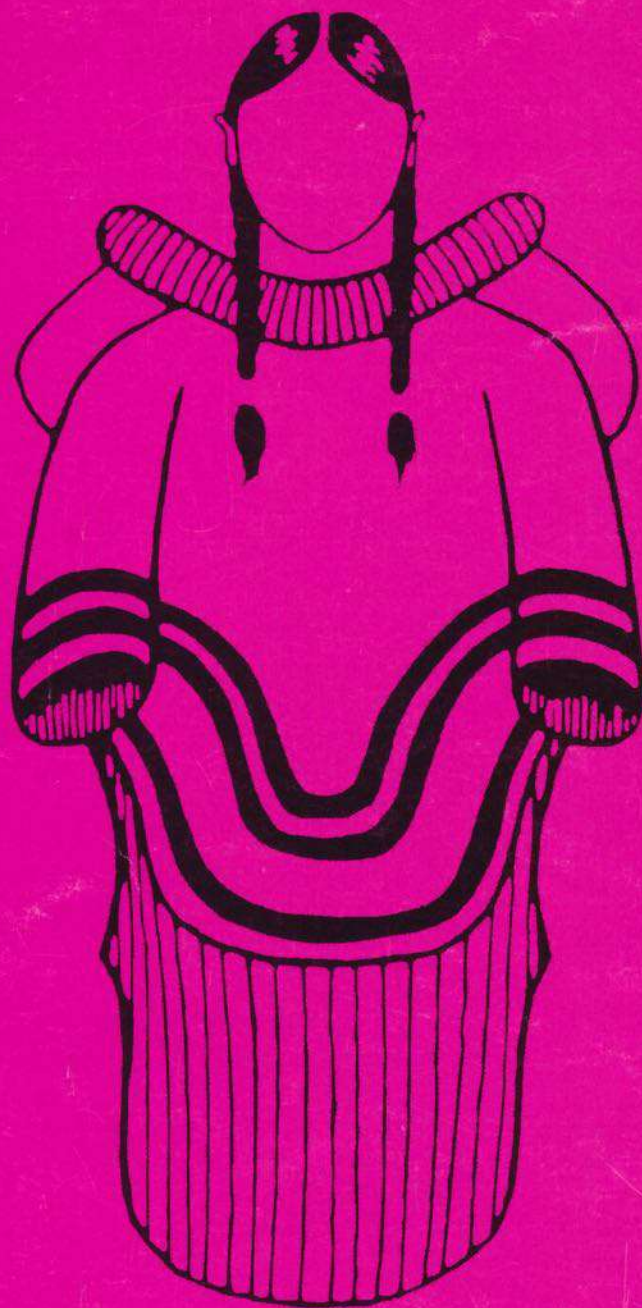
ḥ'š'š' Δ'c'š'š'ṛ'ḥ'ḥ' ḏ'ṛ'ḥ'Δ'ḥ': Δ'c' ḏ'

[illegible]

Inukjuak, 1920, Robert J. Flaherty (Rev 230, Archives Révillion, Paris)

Δεκέμβριος, 1920-Γ, 5ος έτος 4ου τάξου (230, 188, 170, 150, 130, 110, 90, 70, 50, 30, 10, 0)

L'AL 13-F: 009059PL25 20-0-00



Pauktuutit
Inuit Women's Association
200 Elgin Street, Suite 804
Ottawa, Ontario
K2P 1L5

(613) 238-3977
(613) 238-1787 (fax)